

Model: OXIDE BROWN NAT.PV6 120X120(A)

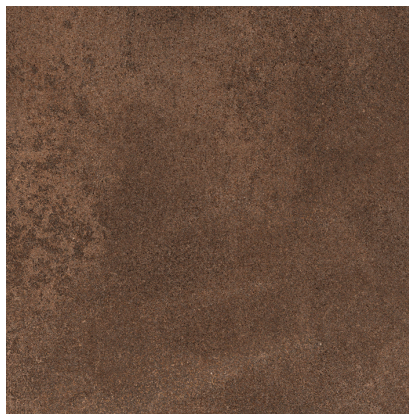
Codes: 100331105

Absorption: Bla - Porcelánico ($E \leq 0.1\%$)

Finish: Standard

Tone variations: V3

Rectified: Yes



DIMENSIONAL FEATURES


UNE-EN ISO 10545-2

Length	1200 mm	
Thickness	6 mm	
Width	1200 mm	
Length and width deviation	Below 0.15%	+/-0.3%*
Side straightness deviation	Below 0.15%	+/-0.3%*
Squareness deviation	Below 0.15%	+/-0.3%*
Surface flatness deviation	Below 0.15%	+/-0.4%*

*ISO-13006:2015 UNE-EN 14411:2017

FEATURES

 General deshaded design with a degree of color and appearance variation.

 Name given to the finish of those tiles dimensionally improved after the firing process.

 Installation on floor

MECHANICAL FEATURES

UNE-EN ISO 10545-4-6-7-11

Breaking strenght	1118.5 N	
Modulus of rupture	43.6 N/mm ²	
Crack resistance	RESISTE 3 CICLOS	
Resistance to thermal shock	RESISTE	

*ISO-13006:2015 UNE-EN 14411:2017

HYGIENIC FEATURES

UNE-EN ISO 10545-13-14

Chemical resistance	MINIMO CLASE B	
Stain resistance	CLASE 5	
Resistance to thermal shock	RESISTE	

*ISO-13006:2015 UNE-EN 14411:2017

ANTI-SLIP VALUE

CEN/TS 41901/02, DIN-51130 y ASTM A137.1

Slip resistance (wet pendulum) trrl	CL1	
Slip resistance (pendulum-dry)	>40*	

*ISO-13006:2015 UNE-EN 14411:2017

System Certification



Do not use cleaning agents containing hydrofluoric acid.

It is recommended to fix tiles with a minimum joint of 1,5 mm. Do not fix without joint.

For big sizes, it is recommended to fix with mortars containing polymeric additives and to use the double glueing technique.

Mosaic tiles must be grouted.

**See point 4 of supporting document DB/SUA 3. This material can be installed in dry public areas with a slope of less than 6% (it achieves the same scope of use as a class 1 according to the wet pendulum test).

PACKING

Sales units per box	2.880184 M2/BOX	
Sales units per pallet	80.645161 M2/PAL	
Sales units per unit	1.440092 M2/PIECE	

SCOPE OF USE

Technical code-1	4 - Light Transit with Direct Access to the Outdoors	
Technical code-2	1 - Dry interior floors	

RECOMMENDED USE LOCATIONS

Single-family dwelling

Outdoor Premises: Porches, verandah, terrace, outdoor access or circulation area

Indoor Premises - Dry: Entrance and other enclosures with direct opening to the outside (garden, terrace, storage room).

Indoor Premises - Dry: Individual staircase

Indoor Premises - Wet: Kitchen, mini kitchen in living area, laundry room

Indoor Premises - Humid: Bathroom or Toilet

Collective housing

Outdoor premises: Balconies, terraces, galleries (not accessible from the outside)

Indoor Premises - Common Elements: Stairs and corridors with or without lifts

Indoor Premises - Common Elements: Meter centralisation room

Indoor Premises - Common Elements: Storage rooms for children's cars, bicycles, etc.

Indoor Premises - Dwelling - Damp: Kitchen, mini kitchen and living area, laundry room

Indoor Premises - Dwelling - Damp: Bathrooms or shower rooms

Public Residential

Single or double rooms

Group rooms

Intensive use dormitories in residences, schools, etc.

Administrative

Office with workstation

Collective office, open plan office

Meeting/conference room, shops and retail (sales area)

Commercial

Shops and retail trade (Sales area)

Teacher

Pre-school and Primary: Classroom without direct opening to the exterior

Infant and Primary: Playroom, exercise, multi-purpose room without direct opening to the outside.

Secondary, Baccalaureate and University: Other laboratories (physics, electricity, radiation, mechanics).

Sanitary

Single-user room, isolation room

Collective room

Major and minor operating theatres. Operating theatres

Radiological premises

Rehabilitation, massage, therapy and rehabilitation centres

Laboratories (no public access)

Public attendance

Catering: Dining room, company cafeteria

Libraries and reading rooms: Libraries, reading rooms, houses of worship, museums (Internal use)

Service, facilities

Toilets in office areas, restricted use

Sanitary premises special hygiene (hospitals, food)

Premises for telephone, computer and other dry installations

System Certification



Do not use cleaning agents containing hydrofluoric acid.

It is recommended to fix tiles with a minimum joint of 1,5 mm. Do not fix without joint.

For big sizes, it is recommended to fix with mortars containing polymeric additives and to use the double gluing technique.

Mosaic tiles must be grouted.

**See point 4 of supporting document DB/SUA 3. This material can be installed in dry public areas with a slope of less than 6% (it achieves the same scope of use as a class 1 according to the wet pendulum test).